

# Rachio Installation Quick Start Guide

## 1. Install Rachio App on Homeowner's Phone

Ask the homeowner to download the Rachio app & create an account.

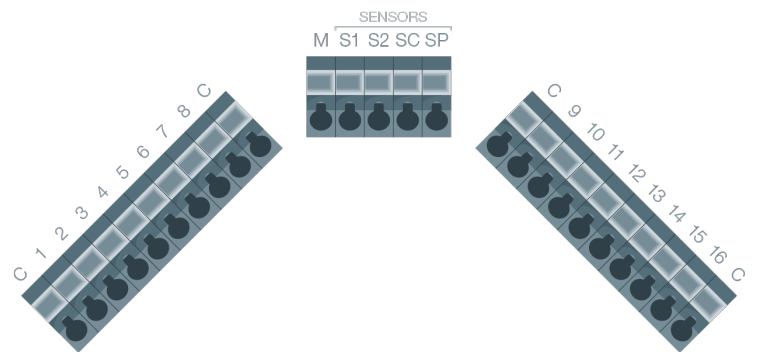
Ensure that the client's phone is connected to the network that they would like the controller to be set up on.



## 2. Connect Controller to Wi-Fi

The initial connection to Wi-Fi should take place using the homeowner's smartphone on their Rachio account.

Connect the controller to a 2.4/dual band network. If you encounter problems, please contact Rachio support and reference the light code you're seeing.

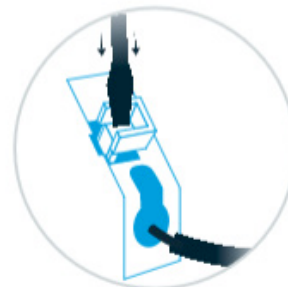


## 3. Install Controller

Take a photo of the wiring on the old controller and remove from the wall.

Mount the Rachio controller and rewire; reference the photo of the original wiring.

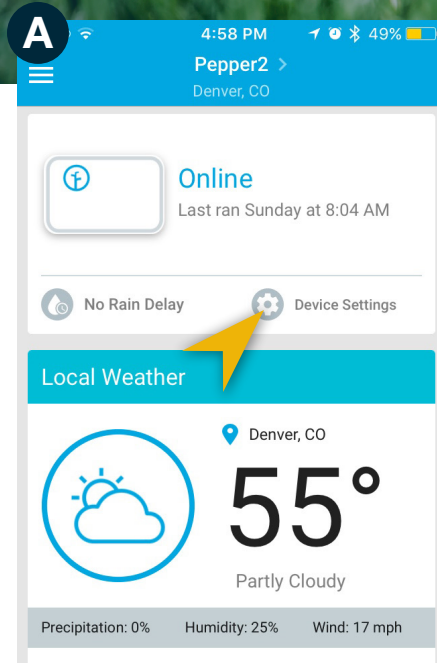
Plug in the controller and test a zone using manual operation on the controller.



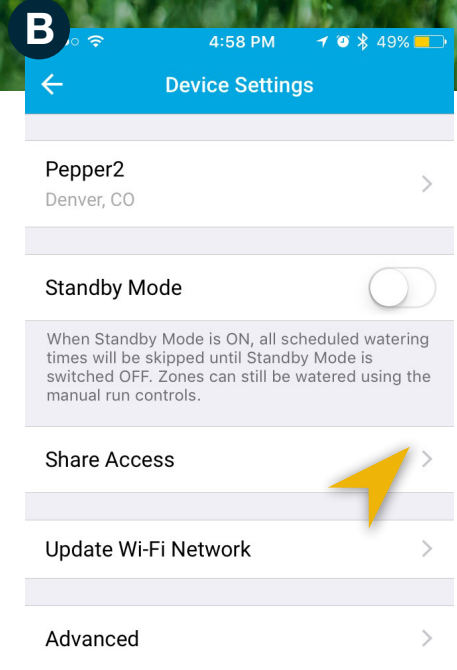


## 4. Share Access of the Controller

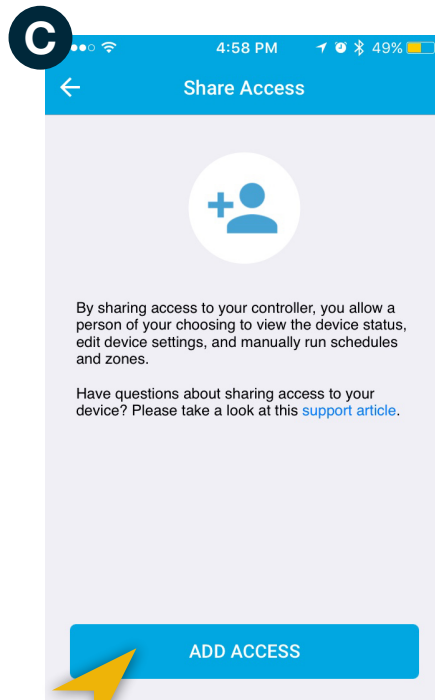
Share access of the controller to your company Rachio account.



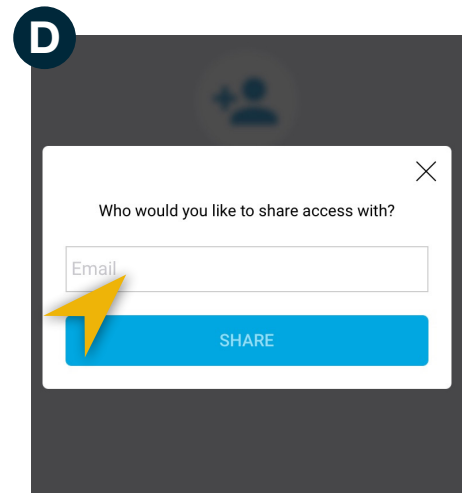
Tap "Device Settings" on the dashboard.



Tap "Share Access" in Device Settings



Tap "Add Access"



Enter the company Rachio account email address.

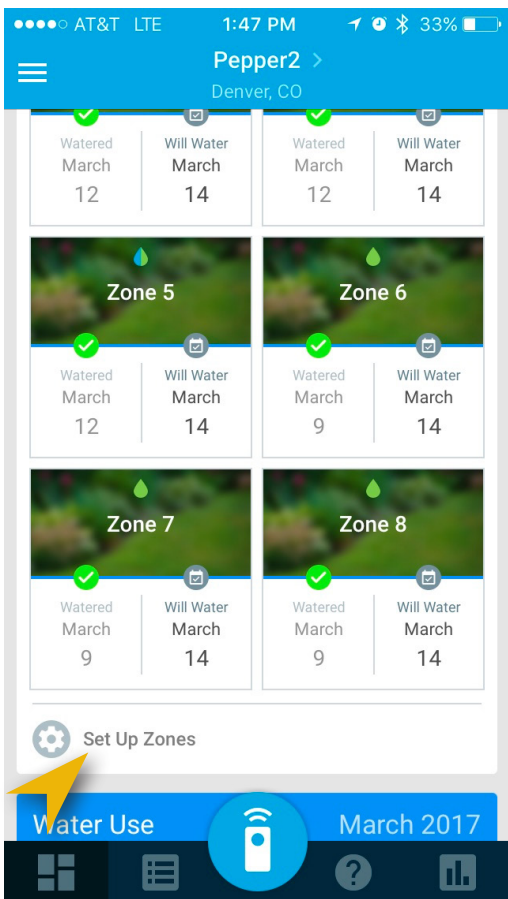
Company Rachio account email address :

\_\_\_\_\_

## 5. Configure Zones

Tap “Set up Zones” under the My Yard card. The app will guide you through setting up your zones, one by one.

If the homeowner has a drip zone, create a separate watering schedule. Check and adhere to any local watering restrictions.



## 6. Create a Schedule

Go to Edit Watering Schedule under the Watering Schedule card. Tap the “+” sign to create a new schedule.

### Available schedule types:

- Fixed Interval  
Waters on a set interval or odd/even days
- Fixed Days  
Waters on specific days of the week
- Flexible Monthly  
Adjusts monthly based on local climate
- Flexible Daily  
Adjusts daily based on soil moisture

